



**Tork Hand Towel Multifold & C-Fold Dispenser:**

H23/H25 System: 73TR (smoke)  
**Dispenser Dimensions HxWxD (Inches):**  
 18 x 11.75 x 6.25 (45.72 x 29.85 x 15.88 cm)

**Multifold/C-Fold Product Options:**

**H2/H23/H25 System Products:**

All C-folded Towels Fit.  
 All Multifold Towels Fit (except MB538 and MK518A)



**Tork Hand Towel Singlefold Dispenser:**

H22 System: 70WM1 (white)  
**Dispenser Dimensions HxWxD (Inches):**  
 9.25 x 11.75 x 5.75 (23.50 x 29.85 x 14.61 cm)

**Singlefold Towel Product Options:**

**H22 System Products:**

SB1840A (Tork Universal, White)  
 SK1850A (Tork Universal, Natural)  
 192121 Tork Windshield Paper Towel, 1-Ply  
 192122 Tork Windshield Paper Towel, 2-Ply  
 2247010 Tork Dairy Towel, Drying, Natural  
 2234001 Tork Dairy Towel, Pre-Drip, Natural  
 2225000 Tork Dairy Towel, Drying, Natural White  
 SB1842 Tork Universal Singlefold Hand Towel, White  
 221845 Tork Universal Singlefold Hand Towel, Natural White

**Part Description with Replacement Instructions**

Parts with SKUs listed are available for order as of the revision date on the manual. Contact an Essity Sales Rep or the Essity Quality Coordinator to order these parts.

If no SKU is listed, the availability of the part is unknown. Please contact the Essity Quality Coordinator for more information (see [Contacting Essity](#) section).

**Replacement SKU      Description & Replacement Instructions**

LOCKINSERT	LOCK FINGERS (73TR only) Un-mounting the dispenser is required to remove the lock fingers. Locate the tabs that secure the lock fingers on the back of the dispenser. Bend the tabs to a position in which the fingers can be removed.
73TR COVER (comes with hood pivots and #14 key)	73TR REPLACEMENT COVER To remove, locate the hood pivots. Each pivot will have a split end on the inside of the dispenser. With a plier, squeeze the two split ends together and simultaneously pull the hood pivot out.
	COVERS for the other models
#1 KEY	#1 DISP KEY (70WM1)
#14 KEY	#14 DISP KEY (73TR)

### **Mounting height**

The lower part of the dispenser should be 47 inches  
47 inches 120 cm 120 cm  
from the floor.

### **Preventive Maintenance**

All folded towel dispensers should be cleaned any time there is heavy paper dust build-up inside the dispenser. If paper dust is not a problem, approximately every year is a good frequency for cleanings. The following is the recommended procedure to cleaning:

- 1) Open the dispenser and remove the remaining towels.
- 2) Clean out any paper dust. This can be done in several ways, such as, vacuuming, blowing out with a can of compressed air (wear safety glasses), wiping out with a damp cloth, etc.
- 3) Clean the cover with a general all-purpose cleaner that is safe for plastics.

### **Troubleshooting**

#### **Problem: Multifold dispensing poorly.**

- Inform your Essity Sales Rep or the Essity Quality Coordinator of the problem. Adapters are available that may improve dispensing in older dispensers.

#### **Problem: Any paper-related problem.**

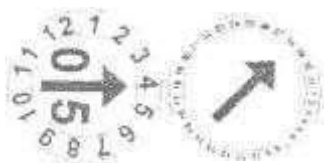
- Take note of the date code on the outside of the case of paper product. Then contact the Essity Quality Coordinator and explain the problem.

#### **Problem: Any other problem not stated above.**

- Contact the Essity Quality Coordinator.

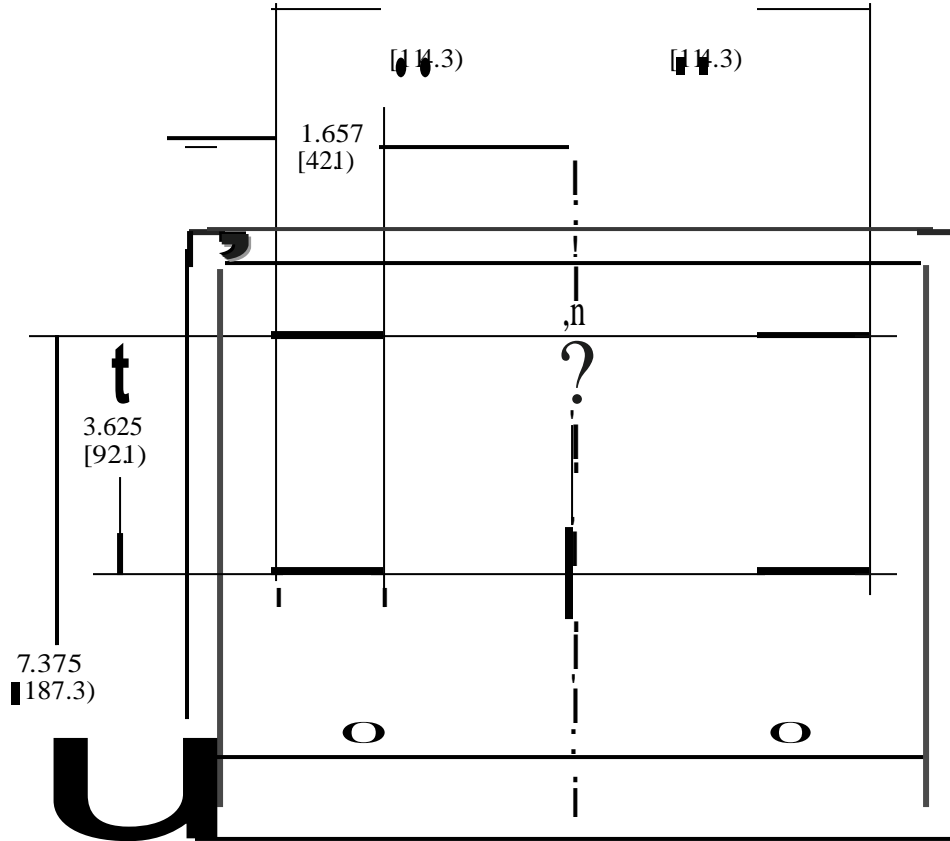
### **Contacting Essity**

To contact the Essity Quality Coordinator, dial 1-866-722-6659 and press 6. If asked for the date code on the dispenser, see instructions below.



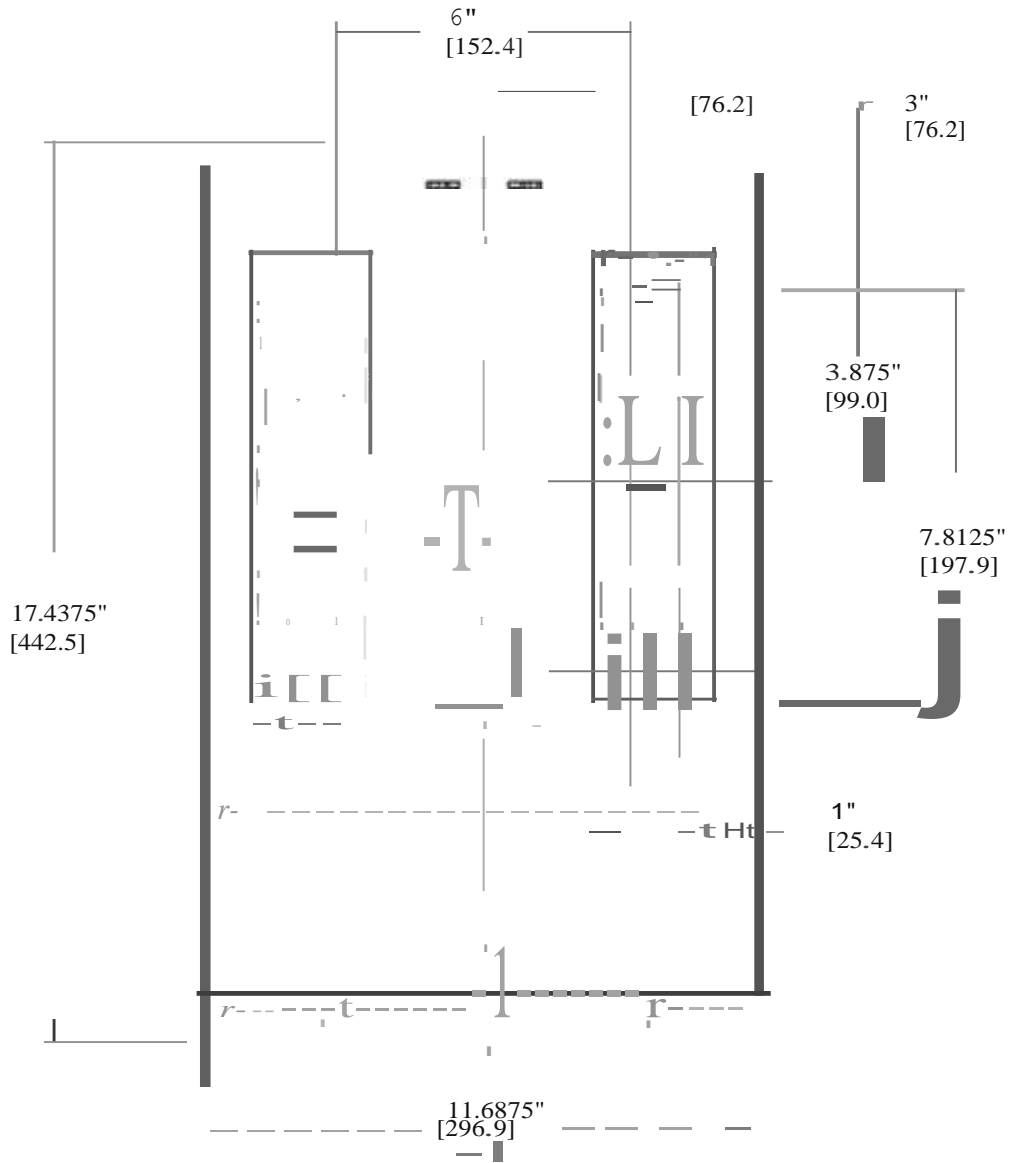
Product Code Date Location: On the 73TR, circles should be molded into the inside back wall. The circle on the right shows an arrow pointing to the month, with the year in the center of circle. The left circle shows the day of month. Some dispensers may not have the day circle, but should have the month and year circle.

## 70WM1 – Tork Hand Towel Singlefold Dispenser Mounting Instructions



Back View

## 73TR-Tork Hand Towel Multifold / C- Fold Dispenser Mounting Instructions



U CK IEW